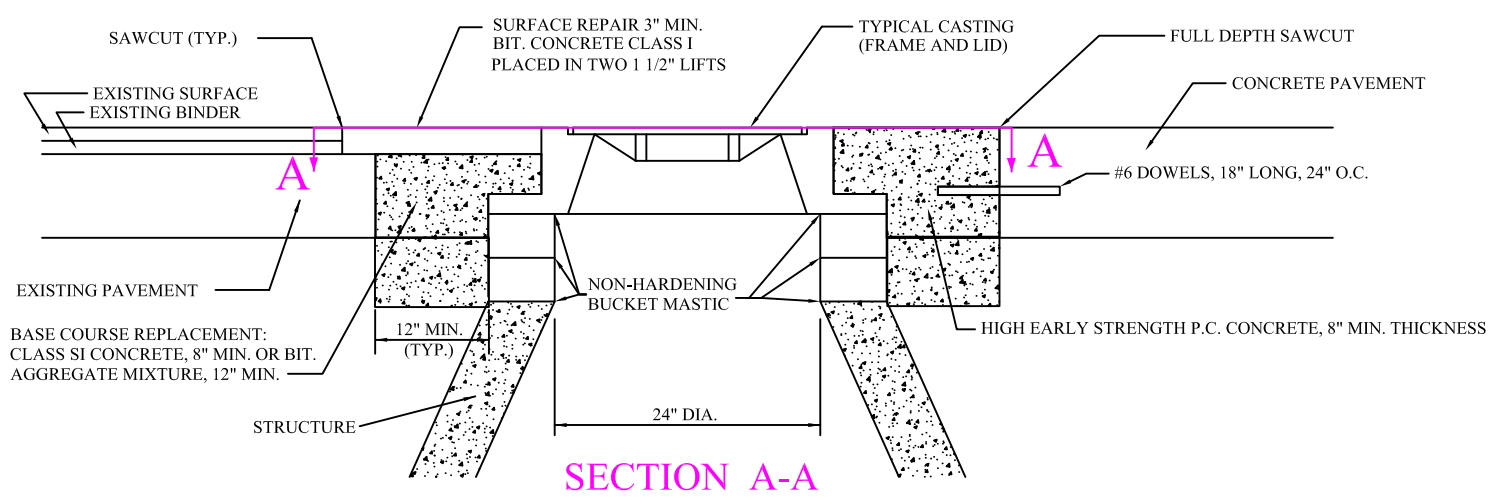
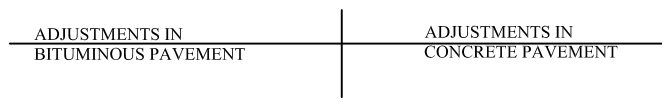


**PLAN**



**SECTION A-A**

**GENERAL NOTES:**

1. PROVIDE CA-6 BACKFILL AROUND MANHOLE TO SUBGRADE ELEVATION.
2. WHEN THE FRAME DOES NOT MEET THE PROPOSED ELEVATION, ADJUSTING RINGS SHALL BE USED FOR FINAL ADJUSTMENT. A MAXIMUM OF 3 ADJUSTING RINGS MAY BE USED TO A MAXIMUM HEIGHT OF 12 INCHES. CONCRETE, RUBBERIZED, HIGH DENSITY EXPANDED POLYSTYRENE WITH A POLYUREA COATING OR EXPANDED POLYPROPYLENE RINGS MAY USED (ALL RINGS MUST BE IDOT APPROVED). CONCRETE RINGS MAY BE NO LESS THAN 3 INCHES THICK. EACH RING SHALL BE SEALED UNDERNEATH THE FRAME PER THE PRODUCT MANUFACTURERS SPECIFICATIONS WITH THE APPROVAL OF THE ENGINEER.
3. PRECAST ADJUSTING RINGS SHALL BE REINFORCED WITH NO. 3 GAUGE WIRE OR EQUIVALENT AND SHALL HAVE A MINIMUM THICKNESS OF 3 INCHES.
4. WHEN ADJUSTMENTS ARE LOCATED IN TRAVEL LANES, THEY SHALL BE PROTECTED BY A BARRICADE WITH 2 FLASHING LIGHTS, 2 BARRICADES EACH WITH A SINGLE FLASHING LIGHT OR COVERED BY A 1 INCH STEEL PLATE PROVIDED AND MAINTAINED BY THE CONTRACTOR UNTIL THE SURFACE RESTORATION IS COMPLETE.
5. WHEN ADJUSTMENTS TEMPORARILY RAISE A CASTING ABOVE THE ELEVATION OF THE PAVEMENT SURFACE, IN AREAS SUBJECTED TO VEHICULAR TRAFFIC, A BITUMINOUS RAMP SHALL BE TRANSITIONED A DISTANCE OF 1 FOOT HORIZONTAL FOR EACH INCH OF VERTICAL DISTANCE ABOVE THE EXISTING PAVEMENT. SUCH RAMPS SHALL BE MAINTAINED BY THE CONTRACTOR UNTIL THE COMPLETION OF THE SURFACE RESTORATION.
6. FOR BOTH CONCRETE AND ASPHALT ROADS, THE BASE COURSE REPLACEMENT (CONCRETE COLLAR) SHALL BE EXTENDED DOWN TO THE TOP OF THE CONE SECTION.

REV.:	REV.:
REV.: TEG	REV.: 02-02-2024
DRAWN BY: VJGL	DATE: 02-16-1998

**CASTING ADJUSTMENTS FOR STRUCTURES IN PAVED AREAS**

VILLAGE OF LOMBARD
STORM 7