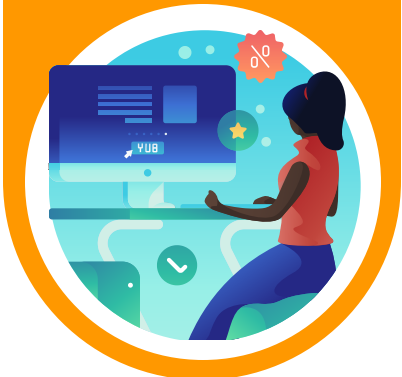
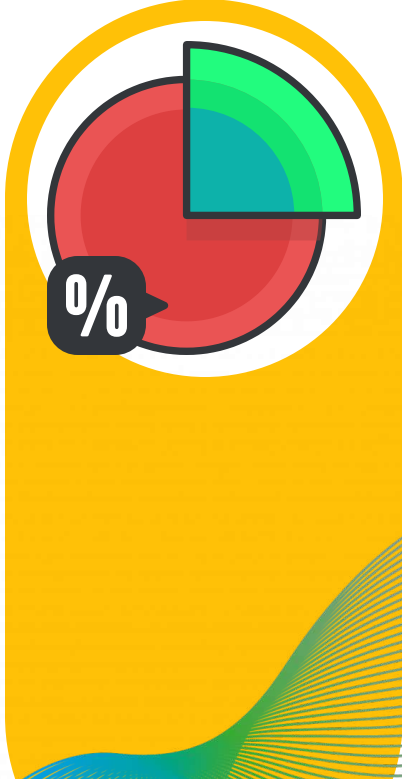


# 2008-2022 MULTI-YEAR REVENUE TREND ANALYSIS



**VILLAGE OF LOMBARD**  
FINANCE DEPARTMENT

# Table of Contents

The Year Ahead .....	03
2008-2022 Sales Tax .....	04
2008-2022 Income Tax .....	05
2008-2022 Personal Property Replacement Tax .....	06
2017-2022 Emergency Medical Services .....	07

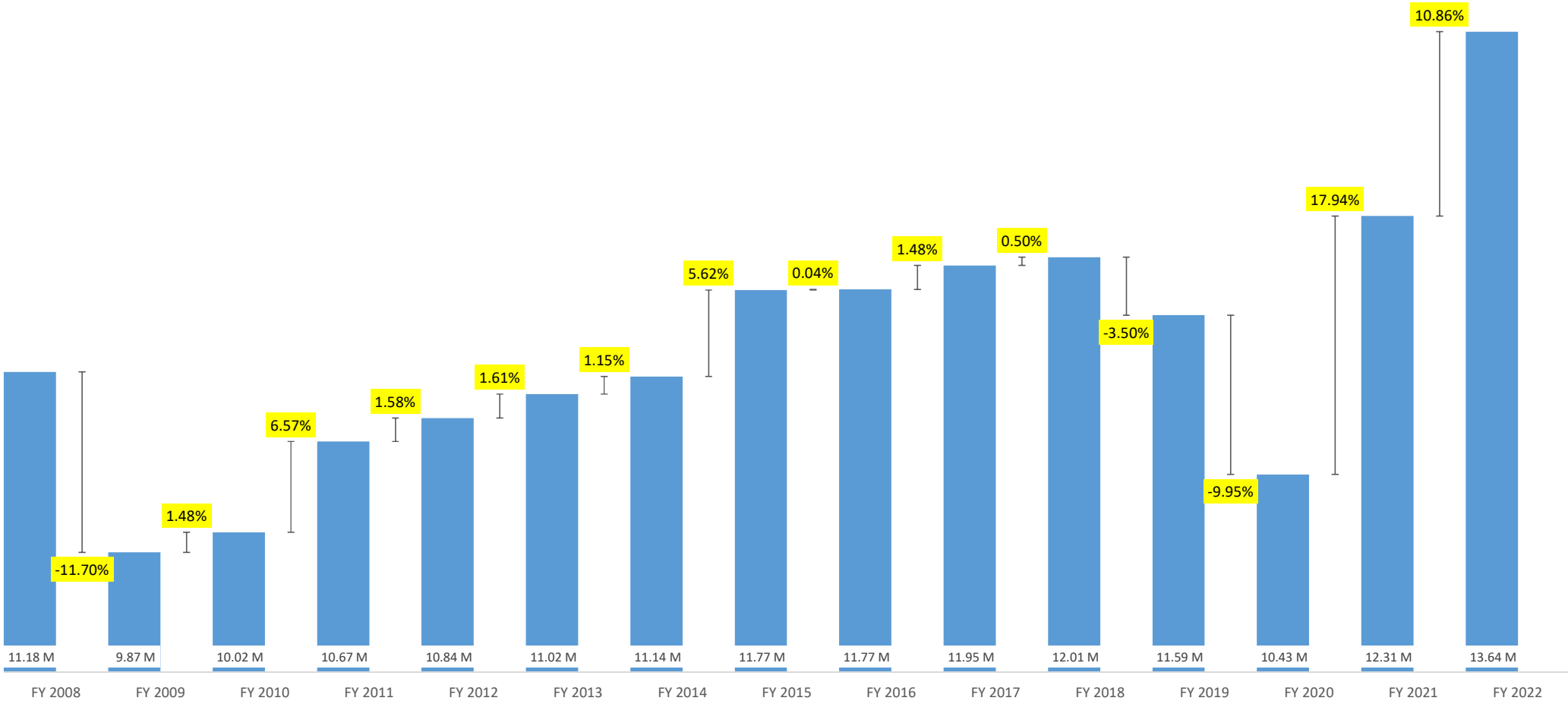


# The Year Ahead

As we wrap up 2022, the following pages provide insight into the drastic increase in some Village revenues compared to the past history of these revenues. It is important to provide some perspective on the increase in these revenues, as the reality is that we will likely not know what the future holds until we have our next pullback in these revenues, likely as a result of a recession in the economy. That could be in 2023, but that is not certain at this point. Generally speaking, it is too early to be able to count on these revenues staying at this higher level over an extended period of time.

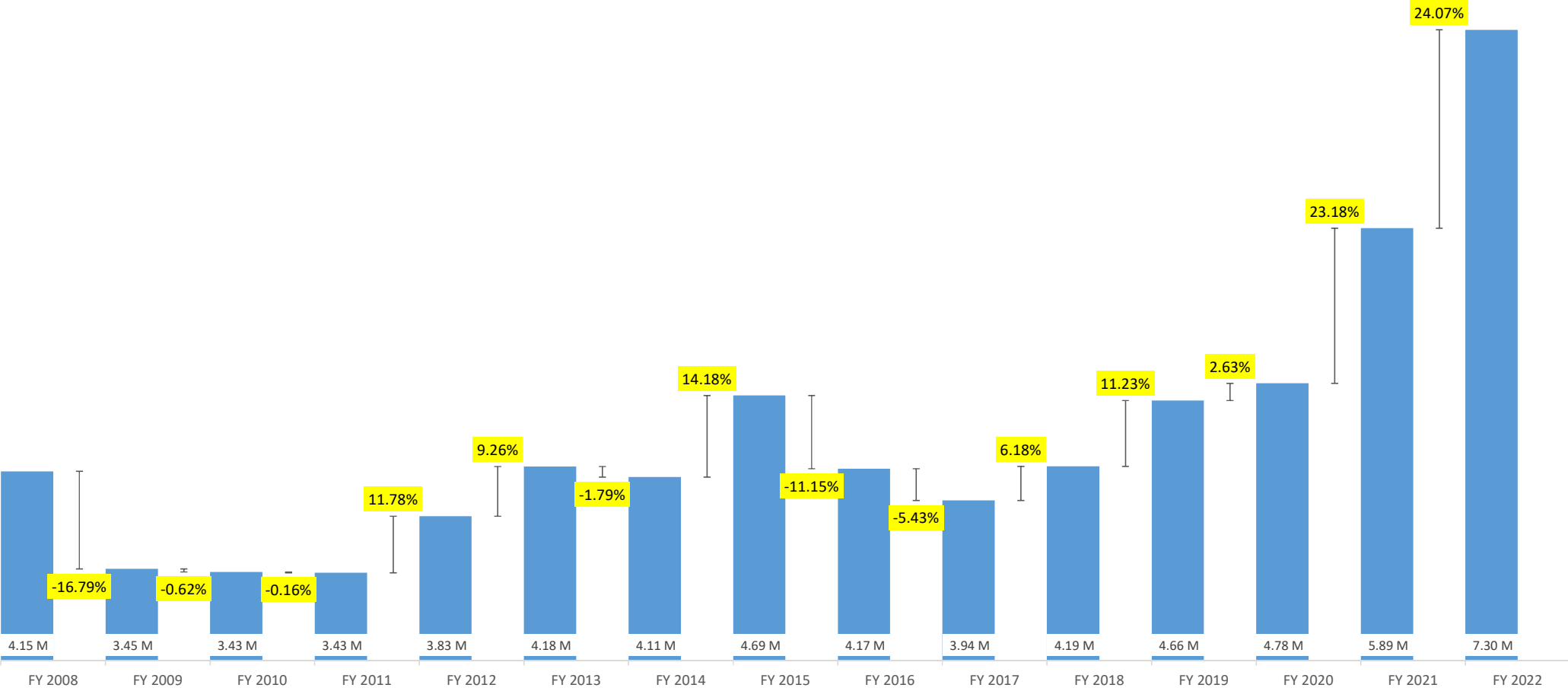


# 2008-2022 Sales Tax



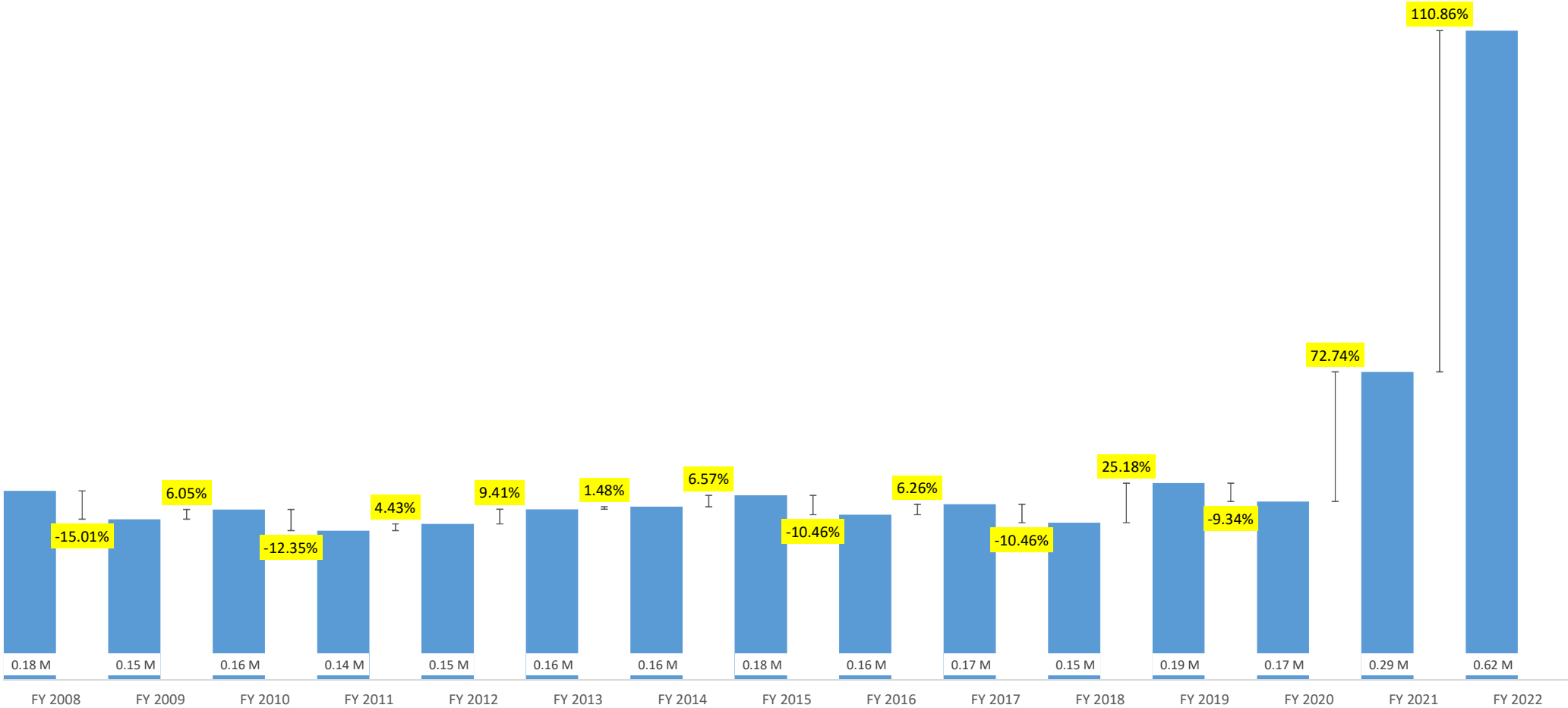
**VILLAGE OF LOMBARD**  
FINANCE DEPARTMENT

# 2008-2022 Income Tax



**VILLAGE OF LOMBARD**  
FINANCE DEPARTMENT

# 2008-2022 Personal Property Replacement Tax



**VILLAGE OF LOMBARD**  
FINANCE DEPARTMENT

# 2017-2022 Emergency Medical Services

