

September, 2009

# Downtown Landscape Enhancement Recommendations

Prepared for  
Village of Lombard

Prepared by  
**Hitchcock Design Group**  
180 N. Wacker Drive, Suite 003  
Chicago, Illinois 60606  
T 312.634.2100  
[www.hitchcockdesigngroup.com](http://www.hitchcockdesigngroup.com)

**On the Cover**

The southwest corner of Main Street and St. Charles Road

# Introduction

## **Overall Approach**

The Downtown Lombard Community Vision outlined a series of objectives that support the goal of creating “*a community of excellence exemplified by its government working together with residents and businesses to create a distinctive sense of spirit and an outstanding quality of life.*” One of those objectives was to “*maintain and extend, as appropriate, key Downtown appearance improvements including public right-of-way streetscape.*” During the summer of 2009, the village retained Hitchcock Design Group to identify and summarize potential downtown streetscape improvements for its 2010 Capital Improvement Program. The study area was limited to St. Charles Road from Elizabeth Street to Craig Place. At the same time, opportunities for private property owners to improve highly visible areas adjacent to public property were considered.

Building on valuable work already completed by the Lombard Town Centre Design Committee, village staff members collaborated with the consultant to identify potential improvement opportunities. Then the consultant observed the existing conditions, recommended a variety of practical improvements, estimated potential construction costs, reviewed the recommendations with staff and summarized the conclusions in this report. Please note that the recommendations in this report are not intended to be comprehensive or take the place of more detailed construction or bidding documents, which may be appropriate during implementation. Rather, they are intended to help village leaders prioritize projects and allocate valuable resources.

Overall, the rights-of-way and other public spaces in the study area are attractive and well maintained. There are, however, several opportunities for improvement. During the course of the project, five criterion to identify and conceptualize each opportunity were identified. First, many of the existing design elements, such as the stone walls and the site furnishings should be applied consistently throughout the downtown. Next, gaps in the streetscape where improvements either didn't exist, or where they didn't appear to be successful were identified for infill plantings. Naturally, revitalizing and refreshing the appearance of some of the older improvements, and screening some unsightly views is important. Finally, each improvement should be durable, so the village would get a good long term return on its investment.

*Establish and consistently apply design standards*

*Fill in gaps*

*Revitalize appearance*

*Screen unsightly views*

*Use durable materials and consistent maintenance for long term return on investment*

# Design Standards

## Overall

The Village has created a unified appearance by selecting and utilizing consistent site furnishings and materials. Stone, concrete pavers, bronze coloring and stylized lighting mark the consistent elements in the existing downtown streetscape. The images and information below has been included in this document to give both the Village and private property owners information to use when designing and selecting products for a streetscape within the downtown, whether improvements to existing sites or a new development project.

Any additions to the materials should be evaluated for durability, cost, and maintenance requirements. Hanging baskets on the light poles is one example that, although beautiful, requires a significant amount of maintenance. The decision to install them must be balanced with an associated understanding of the additional maintenance costs.



Skateboard Deterrent Metal Band



Trash Receptacle



Bollard



Street Light

PREPARED FOR:  
Village of Lombard

## Streetscape Materials

Lombard, Illinois



Movable Planters (Large and Small)



Bench (without back and with back)



Tree Grate



Bicycle Rack



Decorative Railing



Limestone Wall with Precast Cap

PREPARED FOR:  
Village of Lombard

# Streetscape Materials

Lombard, Illinois



PREPARED FOR:  
Village of Lombard

# Project Locations

Lombard, Illinois

# Design Recommendations

## 1 Lombard Plaza Parking Lot (Private)

There is a significant opportunity to create a gateway to Downtown Lombard at this site. Replace the current shopping center sign with a new monument sign constructed of high quality materials to advertise the center's tenants. The addition of a compatible sign wall will improve the aesthetics of the site while informing pedestrians and motorists they are entering the downtown. Low growing landscape, with seasonal interest, softens the signage and screens views of the parking lot.

*Cost Opinion*  
\$85,000 - \$110,000

## 2 Sprinkler Park / Tot Lot (Public/Private)

The lack of landscape in this space creates a very stark environment. The addition of low shrubs between the park fence and stone wall will provide a more comfortable separation between park users and the street. Foundation landscaping around the bank signage will greatly increase the appearance of the site.

*Cost Opinion*  
\$4,500 - \$5,500

## 3 115-117 West St. Charles Road (Private)

This site has ample space for landscape enhancements that will soften the parking lot. Removing some of the brick pavers between light poles will provide space for new curbed landscape planters with trees, shrubs and perennials. Maintaining portions of the brick paver sidewalk will allow for pedestrian circulation in the parking lot. Seasonal landscape in front of the stone walls at the entrance to the parking lot will enhance the entrance and the existing streetscape.

*Cost Opinion*  
\$20,000 - \$22,000

## 4A Orchard Terrace Parking Lot / Park Avenue Condominiums detention area (Public/Private)

4B The design intent of this site is good, however, there appears to be a lack of general maintenance. Filling in gaps in the landscape with shrubs, perennials and groundcover will help to reduce erosion from water running off of the parking lot and improve the overall appearance of the planting. Also, the addition of a gravel strip along the parking lot edge of the planters will act as a french drain to collect stormwater runoff before it erodes the mulch and soil in the planting islands.

The detention area adjacent to the parking lots needs to be cleaned out and planted with native sedges and forbes that tolerate standing water. Removing the rusting and leaning fence around the perimeter of the detention area will greatly enhance the appearance of the area as well.

*Cost Opinion*  
\$6,000 - \$7,500

## 5A Lombard Fountain / Lombard Clock (Public)

5B Overall, these sites are in good condition. Given their prominent location within the downtown, they need more seasonal color. The addition of seasonal plantings to fill the voids in the planting will add life to the streetscape. The Village should encourage business owners to put planters with seasonal plantings outside of their businesses to increase the overall appeal of the streetscape.

*Cost Opinion*  
Include in yearly maintenance contract

## 6A Michael McGuire Drive / Metra Embankment (Private)

6B This site has suffered from a lack of maintenance. The parking lot landscape islands need to be cleaned out and planted with low maintenance plant materials that are salt tolerant and can handle snow loading. In addition, plants or an architectural treatment that softens the building wall and evergreens that screen the trash enclosure will greatly enhance the site. The landscape along the Metra tracks is good overall, however, there are some missing ornamental trees and shrubs that should be replaced to complete the landscape. In addition, providing several plantings at the train station will help to improve the overall image.

*Cost Opinion*  
\$2,300 - \$2,800

## 7 Volunteer Plaza (Public)

This public plaza is currently in good condition. Gaps in the landscape planting should be filled in with colorful perennials/annuals and evergreens/ornamental grasses to provide four-season interest. Ornamental fencing that matches the plaza fencing should be added along the landscape area between the plaza and the parking lot to prevent pedestrians from walking through the landscape. Designated walk through paths should be clearly identified. In addition, the existing shade trees should be pruned as necessary.

*Cost Opinion*  
\$4,500 - \$5,500, include seasonal planting in yearly maintenance contract

## 8 7-Eleven Plaza (Public)

This site is very popular. The existing trees provide shade for plaza users to sit under; however, the trees should be pruned so that the understory planting will be more successful. There is not much understory planting now. Plant new low maintenance, shade tolerant plants that will provide color and make the plaza more inviting. Plant the planters seasonal plantings that will make the plaza more inviting and prevent plaza users from putting trash in them.

*Cost Opinion*  
\$3,000 - \$3,500

## 9 Marathon Gas Station (Private)

The corner of the gas station property is a very prominent location in the downtown. Removing as much asphalt as possible while maintaining vehicular circulation around the gas pumps will provide a nice area for landscape enhancements. The landscape should be low maintenance and colorful, similar to the landscape in Volunteer Plaza across the street. Adding a fence around the new landscape area will segregate pedestrians and vehicles from the landscaped area. This new landscape addition along with Volunteer Plaza will create a strong gateway for the downtown.

*Cost Opinion*  
\$7,700 - \$8,700

## 10A Hammerschmidt Parking Lot (Public)

10B The historic marker sign wall at the parking lot entrance is attractive. Adding low growing shrubs, perennials and groundcover in front of the wall will give the wall context. Taller shrubs and/or ornamental trees behind the wall will create a nice backdrop. The parkway between the parking lot and St. Charles Road is in good condition. Grouping the existing shade trees in landscape beds of low maintenance shrubs and perennials will screen the parking lot. Also consider the use of a hedge or fence along St. Charles Road adjacent to the parking lot.

*Cost Opinion*  
\$11,000 - \$13,500

## 11 St. Charles Road Parkway / Sculpture Garden (Public)

There is an interest in creating a sculpture garden at this site. There is room to regrade the parkway to provide low berms for sculpture settings. Planting shade trees along the railroad tracks will create a screen. Shrubs, perennial and groundcover landscape beds will provide context for the sculptures as well as help screen the railroad tracks. Improvements at this site will need to be coordinated with the railroad. Sculptures will be provided by others.

*Cost Opinion*  
\$55,000 - \$60,000

## 12 Park Avenue Condominiums (Private)

The landscape and signage at Park Avenue Condominiums can be enhanced and updated. Many of the issues at this site can easily be addressed with modifications to maintenance practices. Gaps in the landscape beds should be filled with shrubs, perennials and groundcover and the shrubs adjacent to the sign should be allowed to fill in rather than clipped to create space between each plant.

*Cost Opinion*  
Include in yearly maintenance contract

Note: Cost opinions are preliminary, including fees, but do not include permitting costs, utility adjustments, easements, or irrigation systems

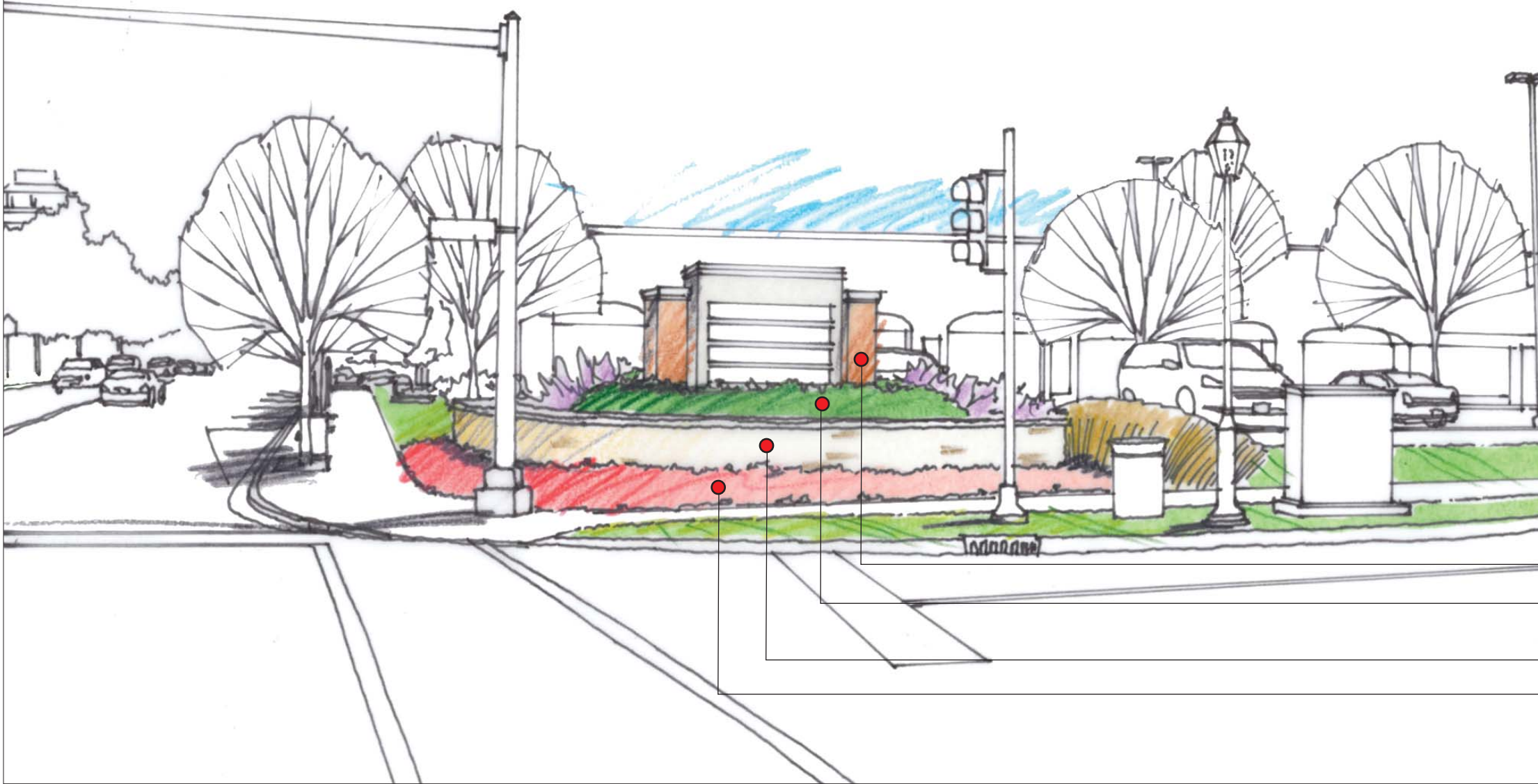
PREPARED FOR:  
Village of Lombard

## Project Summaries

Lombard, Illinois

  
Hitchcock  
Design Group  
Creating Better Places®

PROJECT NUMBER: 03-0894-002  
All drawings are preliminary and subject to change.  
© 2009 Hitchcock Design Group



## Landscape Enhancements

### Ownership

Public  Private

### Plant Material (see plant palette for a list of recommended plants)

Sun  Shade  Seasonal  Evergreen  Native

Shade Tree  Ornamental Tree  Shrubs  Perennials  Groundcover

### Cost

\$15,000 (Monument Sign)  
 \$70,000 - \$ 95,000 (Wall/Plantings)  
 \$85,000 - \$110,000 (Total)

### Special Considerations

- Consider installing an automatic irrigation system with sign and landscape
- Maintain plants at appropriate heights within sight triangle
- Landscape and signage should not block view to building
- Water plants until established, continue to monitor and water as needed
- Complement existing Downtown streetscape elements - stone material



Existing conditions

- Install new shopping center monument sign
- Plant shrubs, perennials, and groundcover around sign to screen parking lot
- Install sign wall to create a gateway into the downtown
- Plant low groundcover or annuals

PREPARED FOR:  
 Village of Lombard

# Lombard Plaza Parking Lot

Lombard, Illinois





## Landscape Enhancements

### Ownership

Public  Private

### Plant Material (see plant palette for a list of recommended plants)

Sun  Shade  Seasonal  Evergreen  Native

Shade Tree  Ornamental Tree  Shrubs  Perennials  Groundcover

### Cost

\$4,500 - \$5,500

### Special Considerations

- Coordinate all landscape enhancements on private property with owner
- Water plants until established, continue to monitor and water as needed
- Maintain plant material at heights that do not block views into sprinkler park
- Encourage property owners to maintain landscape on private property
- Do not block signage
- Remove existing stone

Remove pavers and install new foundation plants between walls and fence

Remove existing stone and plant low growing shrubs, perennials, and groundcover around signage allowing for a clear line of sight

PREPARED FOR:  
Village of Lombard

# Sprinkler Park / Tot Lot

Lombard, Illinois





### Landscape Enhancements

#### Ownership

Public  Private

#### Plant Material (see plant palette for a list of recommended plants)

Sun  Shade  Seasonal  Evergreen  Native

Shade Tree  Ornamental Tree  Shrubs  Perennials  Groundcover

#### Cost

\$20,000 - \$22,000

#### Special Considerations

- Consider including electric for holiday lighting
- Water plants until established, continue to monitor and water as needed
- Protect landscape from pedestrian cross traffic
- Maintain required car overhang area where new landscape is installed

- Plant shade trees between existing light poles
- Maintain walkways around existing light poles to direct pedestrian circulation through parking lot
- Remove pavers and install 12" height planter curbs and plant with shrubs, perennials, and groundcover to screen parking
- Install planters at a width that maintains a 3.5' minimum clear walkway width
- Remove pavers and install perennials and groundcover at entries

PREPARED FOR:  
Village of Lombard

# 115-117 West St. Charles Road

Lombard, Illinois



PROJECT NUMBER: 03-0894-002  
All drawings are preliminary and subject to change.  
© 2009 Hitchcock Design Group

4A



### Landscape Enhancements

#### Ownership

Public  Private

#### Plant Material (see plant palette for a list of recommended plants)

Sun  Shade  Seasonal  Evergreen  Native

Shade Tree  Ornamental Tree  Shrubs  Perennials  Groundcover

#### Cost

\$1,500 - \$2,500

#### Special Considerations

- Water plants until established, continue to monitor and water as needed
- Protect landscape from pedestrian cross traffic

Install gravel drainage strip at edge of planter to reduce erosion of soil and mulch

Plant perennials and groundcover to fill gaps in existing landscape planting

PREPARED FOR:  
Village of Lombard

## Orchard Terrace Parking Lot

Lombard, Illinois



PROJECT NUMBER: 03-0894-002  
All drawings are preliminary and subject to change.  
© 2009 Hitchcock Design Group

4B



### Landscape Enhancements

#### Ownership

Public  Private

#### Plant Material (see plant palette for a list of recommended plants)

Sun  Shade  Seasonal  Evergreen  Native

Shade Tree  Ornamental Tree  Shrubs  Perennials  Groundcover

#### Cost

\$4,500 - \$5,000

#### Special Considerations

- Coordinate landscape enhancements on private property with owner
- Monitor hydrology and soil to select plants that will grow optimally in existing conditions
- Encourage property owner to maintain landscape on private property
- Water plants until established, continue to monitor and water as needed

Prune existing trees

Remove or replace existing, rusty chainlink fence

Plant detention basin with native sedges and forbes

Remove dead plant material and branches from bottom of detention basin

PREPARED FOR:  
Village of Lombard

## Park Avenue Condominiums detention area

Lombard, Illinois



PROJECT NUMBER: 03-0894-002  
All drawings are preliminary and subject to change.  
© 2009 Hitchcock Design Group

5A



### Landscape Enhancements

**Ownership**  
 Public     Private

**Plant Material (see plant palette for a list of recommended plants)**  
 Sun     Shade     Seasonal     Evergreen     Native  
 Shade Tree     Ornamental Tree     Shrubs     Perennials     Groundcover

**Cost**  
 Include in yearly maintenance contract

**Special Considerations**

- Water plants until established, continue to monitor and create an allowance for watering as needed
- Holiday lighting and decorations
- Four-season rotation to provide optimal color

Encourage business owners to provide planters with seasonal plantings where space allows

Plant colorful annuals to fill gaps in existing landscape. Additional seasonal plantings may include spring bulbs, fall mums and evergreen boughs.

PREPARED FOR:  
Village of Lombard

## Lombard Fountain

Lombard, Illinois



5B



### Landscape Enhancements

#### Ownership

Public     Private

#### Plant Material (see plant palette for a list of recommended plants)

Sun     Shade     Seasonal     Evergreen     Native

Shade Tree     Ornamental Tree     Shrubs     Perennials     Groundcover

#### Cost

Include in yearly maintenance contract

#### Special Considerations

- Water plants until established, continue to monitor and water as needed
- Holiday lighting and decorations
- Four-season rotation to provide optimal color
- Repair or replace existing clock

Standardize temporary signage/banners in rights-of-way and evaluate the possibility of creating a permanent structure for banners

Encourage business owners to provide planters with seasonal plantings where space allows

Plant colorful annuals to fill gaps in existing landscape. Additional seasonal plantings may include spring bulbs, fall mums and evergreen boughs.

PREPARED FOR:  
Village of Lombard

## Lombard Clock

Lombard, Illinois



PROJECT NUMBER: 03-0894-002  
All drawings are preliminary and subject to change.  
© 2009 Hitchcock Design Group

6A



### Landscape Enhancements

#### Ownership

Public  Private

#### Plant Material (see plant palette for a list of recommended plants)

Sun  Shade  Seasonal  Evergreen  Native

Shade Tree  Ornamental Tree  Shrubs  Perennials  Groundcover

#### Cost

\$2,300 - \$2,800

#### Special Considerations

- Water plants until established, continue to monitor and water as needed
- Coordinate landscape enhancements on private property with owner
- Encourage property owners to maintain landscape on private property

Consider an architectural enhancement and/or additional landscape treatment on building facade

Screen trash enclosure with evergreen shrubs

Remove existing landscape and replace with low maintenance shrubs, perennials, and groundcover

PREPARED FOR:  
Village of Lombard

## Michael McGuire Drive

Lombard, Illinois



PROJECT NUMBER: 03-0894-002  
All drawings are preliminary and subject to change.  
© 2009 Hitchcock Design Group



## Landscape Enhancements

### Ownership

Public  Private

### Plant Material (see plant palette for a list of recommended plants)

Sun  Shade  Seasonal  Evergreen  Native

Shade Tree  Ornamental Tree  Shrubs  Perennials  Groundcover

### Cost

Include in yearly maintenance contract

### Special Considerations

- Water plants until established, continue to monitor and water as needed
- Coordinate landscape enhancements with railroad
- Incorporate seasonal plantings around train station

Add/Replace landscape material where necessary or when existing plants die to fill empty spaces

Utilize landscape theme on north and south sides of the railroad tracks

PREPARED FOR:

Village of Lombard

# Metra Embankment

Lombard, Illinois

7



## Landscape Enhancements

### Ownership

Public     Private

### Plant Material (see plant palette for a list of recommended plants)

Sun     Shade     Seasonal     Evergreen     Native

Shade Tree     Ornamental Tree     Shrubs     Perennials     Groundcover

### Cost

\$4,500 - \$5,500

### Special Considerations

- Water plants until established, continue to monitor and water as needed
- Coordinate landscape enhancements on private property with owner
- Encourage property owners to maintain landscape on private property
- Four-season rotation
- Consider installing enhancements to the center of the plaza, landscape or other sculpture

Coordinate with property owner to prune existing trees

Install ornamental fence to discourage pedestrians from walking through landscape

Plant evergreen shrubs and perennials to fill gaps in landscape planting and provide four-season interest

PREPARED FOR:  
Village of Lombard

# Volunteer Plaza

Lombard, Illinois



PROJECT NUMBER: 03-0894-002  
All drawings are preliminary and subject to change.  
© 2009 Hitchcock Design Group



### Landscape Enhancements

#### Ownership

Public  Private

#### Plant Material (see plant palette for a list of recommended plants)

Sun  Shade  Seasonal  Evergreen  Native

Shade Tree  Ornamental Tree  Shrubs  Perennials  Groundcover

#### Cost

\$3,000 - \$3,500

#### Special Considerations

- Water plants until established, continue to monitor and water as needed
- Holiday lighting
- Four-season rotation in small planters
- High maintenance area
- Consider relocating benches to allow views into plaza rather than towards street

Prune existing trees

Plant perennials and groundcover to fill gaps in landscape planting

Clean pavement

Plant seasonal plantings in planters to provide color and prevent plaza users from putting trash in planters

Add planters to enclose plaza space

Plant shrubs, perennials, and groundcover to fill in understory planting

PREPARED FOR:  
Village of Lombard

## 7-Eleven Plaza

Lombard, Illinois





### Landscape Enhancements

#### Ownership

Public  Private

#### Plant Material (see plant palette for a list of recommended plants)

Sun  Shade  Seasonal  Evergreen  Native

Shade Tree  Ornamental Tree  Shrubs  Perennials  Groundcover

#### Cost

\$7,700 - \$8,700

#### Special Considerations

- Water plants until established, continue to monitor and water as needed
- Protect landscape from pedestrian traffic
- Maintain plants at appropriate heights within sight triangles
- Coordinate landscape enhancements on private property with owner
- Encourage property owners to maintain landscape on private property



#### Existing conditions

Plant shrubs, perennials, and groundcover similar to Volunteer Plaza to create a strong gateway

Remove pavement and install raised planter curb with ornamental fence at corner

PREPARED FOR:  
Village of Lombard

## Marathon Gas Station

Lombard, Illinois



PROJECT NUMBER: 03-0894-002  
All drawings are preliminary and subject to change.  
© 2009 Hitchcock Design Group



## Landscape Enhancements

Ownership				
<input checked="" type="checkbox"/> Public	<input type="checkbox"/> Private			
Plant Material (see plant palette for a list of recommended plants)				
<input checked="" type="checkbox"/> Sun	<input type="checkbox"/> Shade	<input type="checkbox"/> Seasonal	<input checked="" type="checkbox"/> Evergreen	<input checked="" type="checkbox"/> Native
<input type="checkbox"/> Shade Tree	<input checked="" type="checkbox"/> Ornamental Tree	<input checked="" type="checkbox"/> Shrubs	<input checked="" type="checkbox"/> Perennials	<input checked="" type="checkbox"/> Groundcover
Cost				
\$2,300 - \$2,800				
Special Considerations				
<ul style="list-style-type: none"> <li>• Water plants until established, continue to monitor and water as needed</li> <li>• Protect landscape from pedestrian traffic</li> <li>• Maintain plants at appropriate heights within sight triangles</li> <li>• Do not block signage</li> </ul>				

Plant medium height shrubs to provide a backdrop for the wall and screen parking lot

Plant foundation shrubs, perennials, and groundcover to soften the wall and enhance entrance

PREPARED FOR:  
Village of Lombard

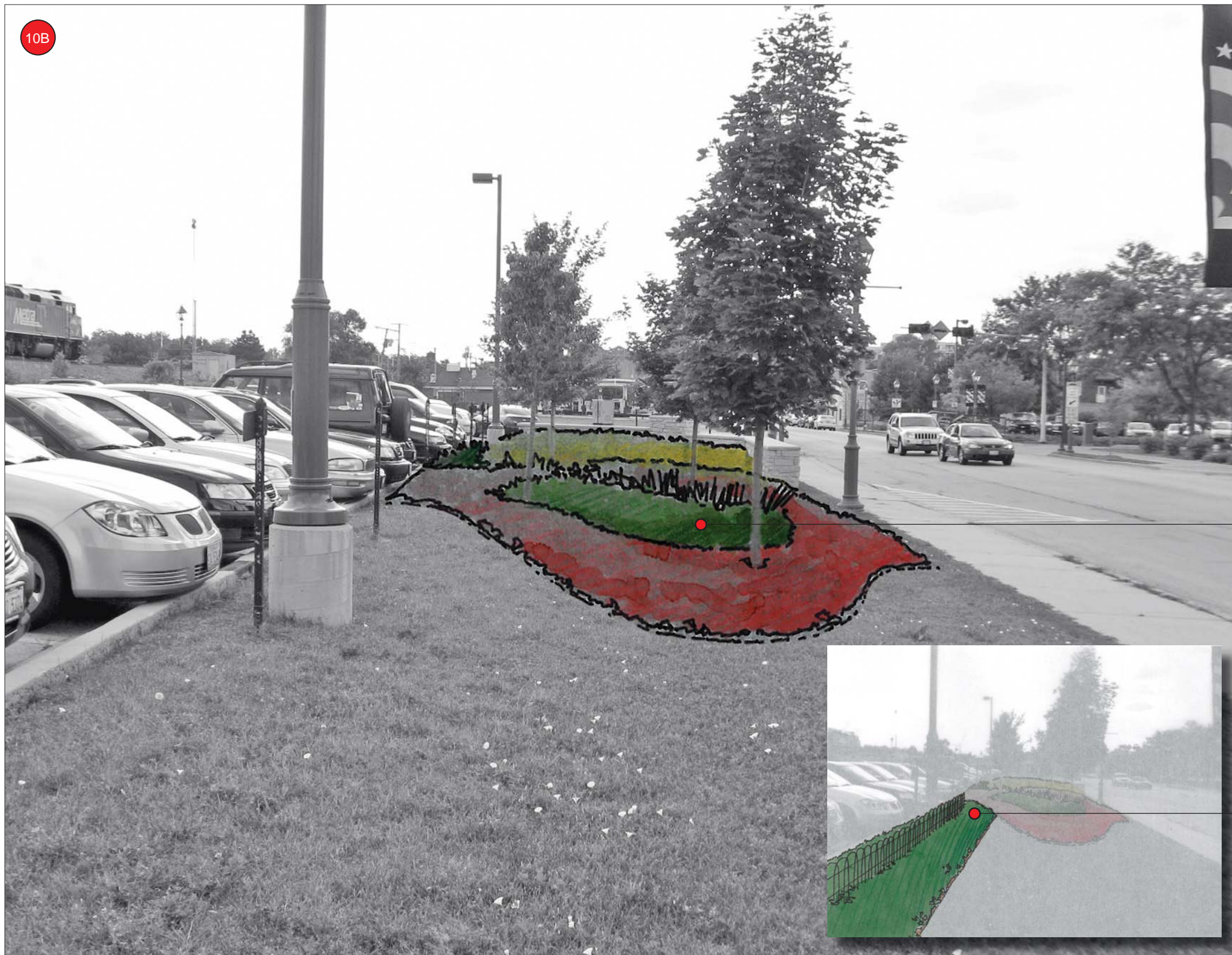
# Hammerschmidt Parking Lot - Historic Marker Sign

Lombard, Illinois



PROJECT NUMBER: 03-0894-002  
All drawings are preliminary and subject to change.  
© 2009 Hitchcock Design Group

10B



### Landscape Enhancements

- Ownership**  
 Public     Private
- Plant Material (see plant palette for a list of recommended plants)**  
 Sun     Shade     Seasonal     Evergreen     Native  
 Shade Tree     Ornamental Tree     Shrubs     Perennials     Groundcover
- Cost**  
 \$8,700 - \$10,700 (assumes 2,000 square feet of landscaping within parkway)
- Special Considerations**
- Water plants until established, continue to monitor and water as needed
  - Maintain plants at appropriate heights

Group existing trees in landscape beds of low maintenance shrubs and groundcover to screen parking lot

If budget allows, consider the use of a hedge or fence to screen parking areas from St. Charles Road. The lower railing utilized in Volunteer Plaza would screen the lower half of a car but not shield the view for enforcement or identifying available parking spaces.

PREPARED FOR:  
Village of Lombard

## Hammerschmidt Parking Lot - Parkway

Lombard, Illinois



PROJECT NUMBER: 03-0894-002  
All drawings are preliminary and subject to change.  
© 2009 Hitchcock Design Group



Landscape Enhancements

Ownership

Public  Private

Plant Material (see plant palette for a list of recommended plants)

Sun  Shade  Seasonal  Evergreen  Native

Shade Tree  Ornamental Tree  Shrubs  Perennials  Groundcover

Cost

\$55,000 - \$60,000 (does not include sculpture)

Special Considerations

- Water plants until established, continue to monitor and water as needed
- Coordinate landscape enhancements with railroad owner
- Provide appropriate safety requirements adjacent to railroad tracks
- Sculptures by other
- Consider installing an automatic irrigation system



Existing conditions

- Plant shade trees to screen railroad tracks
- Plant shrubs, perennials, and groundcover to provide context for sculptures
- Regrade parkway to provide low berms for potential public art program

PREPARED FOR:  
Village of Lombard

St. Charles Road Parkway / Sculpture Garden

Lombard, Illinois





## Landscape Enhancements

### Ownership

Public  Private

### Plant Material (see plant palette for a list of recommended plants)

Sun  Shade  Seasonal  Evergreen  Native

Shade Tree  Ornamental Tree  Shrubs  Perennials  Groundcover

### Cost

Private property owner should include in yearly maintenance contract

### Special Considerations

- Water plants until established, continue to monitor and water as needed
- Reduce pruning between shrubs, allowing them to grow together

Encourage owner to incorporate common design elements found downtown into signage

Plant lower scale shrubs to expose wall and expand the scale of the sign

Fill gaps where they occur and amend with seasonal plantings in high impact locations

PREPARED FOR:  
Village of Lombard

# Park Avenue Condominiums

Lombard, Illinois



# Durable Materials and Consistent Maintenance

The following is a list of recommended plant species and varieties:

## Shade Trees

Botanical Name	Common Name
Acer x freemanii 'Morton'	Marmo Maple
Celtis occidentalis	Common Hackberry
Gleditsia triacanthos var. inermis 'Skycole'	'Skycole' Thornless Honeylocust
Gymnocladus dioica *	Kentucky Coffeetree
Quercus rubra *	Red Oak
Quercus x schuetti *	Swamp Burr Oak
Robinia pseudoacacia 'Benjamin' *	Chicago Blues Black Locust
Tilia americana	American Linden
Tilia cordata 'Greenspire'	Greenspire Littleleaf Linden
Ulmus x frontier	Frontier Elm
Ulmus japonica x wilsoniana 'Morton'	Accolade Elm

## Deciduous Shrubs - Shade

Botanical Name	Common Name
Aronia arbutifolia 'Brilliantissima'	Brilliant Red Chokeberry
Aronia melanocarpa *	Autumn Magic Black Chokeberry
Cotoneaster apiculatus	Cranberry Cotoneaster
Cornus racemosa *	Gray Dogwood
Cornus sericea 'Bergeson Compact' *	Bergeson Compact Redtwig Dogwood
Cornus sericea 'Cardinal' *	Cardinal Redosier Dogwood
Euonymus alatus 'Rudy Haag'	Rudy Haag Dwarf Burning Bush
Hydrangea arborescens 'Annabelle' *	Smooth Hydrangea
Hydrangea quercifolia 'Pee Wee'	Pee Wee Oak-leaf Hydrangea
Rhus aromatica 'Gro-Low' *	Gro-Low Fragrant Sumac
Ribes alpinum 'Green Mound'	Green Mound Alpine Currant
Viburnum carlesii 'Aurora'	Aurora Korean Spice Viburnum
Viburnum carlesii x macrocephalum 'Cayuga'	Cayuga Korean Spice Viburnum
Viburnum lantana 'Mohican'	Mohican Viburnum

## Perennials, Groundcover and Vines - Shade

Botanical Name	Common Name
Ajuga reptans 'Bronze Beauty'	Bronze Beauty Bugleweed
Astilbe chinensis 'Pumila'	Dwarf Chinese Astilbe
Astilbe chinensis 'Visions'	Visions Astilbe
Euonymus fortunei coloratus	Purpleleaf Wintercreeper
Hedera helix 'Thorndale'	Thorndale English Ivy
Heuchera 'Green Spice'	Green Spice Coral Bells
Heuchera 'Marmalade'	Marmalade Coral Bells
Heuchera x 'Palace Purple'	Palace Purple Coral Bells
Hosta varieties	Plantain Lily
Nepeta x faassenii 'Walker's Low'	Walker's Low Nepeta
Pachysandra terminalis 'Green Carpet'	Green Carpet Japanese Pacysandra
Parthenocissus quinquefolia	Virginia Creeper
Parthenocissus tricuspidata	Boston Ivy
Vinca minor	Periwinkle
Waldstenia ternata	Barren Strawberry

## Ornamental Trees

Botanical Name	Common Name
Amelanchier canadensis 'Autumn Brilliance' *	Autumn Brilliance Shadblow Serviceberry
Cercis canadensis *	Eastern Redbud
Crataegus crusgalli var. inermis *	Thornless Cockspur Hawthorn
Malus 'Adams'	Adams Flowering Crabapple
Malus 'Donald Wyman'	Donald Wyman Flowering Crabapple
Malus 'Prairifire'	Prairifire Crabapple
Malus x zumi	Zumi Flowering Crabapple
Syringa reticulata 'Ivory Silk'	Japanese Tree Lilac
Viburnum prunifolium *	Blackhaw Viburnum

## Deciduous Shrubs - Sun

Botanical Name	Common Name
Euonymus alatus 'Rudy Haag'	Rudy Haag Dwarf Burning Bush
Forsythia x intermedia 'Sunrise'	Sunrise Forsythia
Fothergilla gardenia 'KLMtwo' *	Dwarf Fothergilla
Hamamelis vernalis 'Autumn Embers'	Autumn Embers Witchhazel
Ilex verticillata *	Common Winterberry
Rhus aromatica 'Gro-Low' *	Gro-Low Fragrant Sumac
Ribes alpinum 'Green Mound'	Green Mound Alpine Currant
Rosa 'Carefree Wonder'	Carefree Wonder Rose
Rosa 'Nearly Wild'	Nearly Wild Rose
Rosa var. 'Noala'	Flower Carpet Coral Rose
Rosa pavement 'Purple'	Purple Pavement Rose
Spiraea japonica 'Little Princess'	Little Princess Japanese Spirea
Spiraea betulifolia 'Tor'	Tor Birchleaf Spirea
Syringa meyeri 'Palibin'	Palibin Dwarf Lilac
Syringa patula 'Miss Kim'	Miss Kim Dwarf Lilac
Viburnum dentatum 'Autumn Jazz' *	Autumn Jazz Viburnum
Viburnum prunifolium *	Blackhaw Viburnum

## Perennials, Groundcover and Vines - Sun

Botanical Name	Common Name
Achillea millefolium 'Oertel's Rose'	Oertel's Rose Yarrow
Achillea x 'Moonshine'	Moonshine Yarrow
Calamagrostis acutiflora 'Karl Foerster'	Karl Foerster Feather Reed Grass
Calamagrostis acutiflora 'Overdam'	Overdam Feather Reed Grass
Clematis terniflora	Sweet Autumn Clematis
Coreopsis verticillata 'Moonbeam' *	Moonbeam Thread-Leaved Coreopsis
Echinacea purpurea *	Purple Coneflower
Echinacea purpurea 'Kim's Knee High'	Kim's Knee High Purple Coneflower
Euonymus fortunei coloratus	Purpleleaf Wintercreeper
Geranium 'Rozanne'	Rozanne Geranium
Hedera helix 'Thorndale'	Thorndale English Ivy
Helictotrichon sempervirens	Blue Oat Grass
Hemerocallis varieties	Daylily
Heuchera 'Green Spice'	Green Spice Coral Bells
Heuchera 'Marmalade'	Marmalade Coral Bells
Heuchera x 'Palace Purple'	Palace Purple Coral Bells
Liatris spicata 'Kobald' *	Kobald Gayfeather
Molinia caerulea 'Moorflamme'	Moorflamme Purple Moor Grass
Nepeta x faassenii 'Walker's Low'	Walker's Low Nepeta
Pachysandra terminalis 'Green Carpet'	Green Carpet Japanese Pacysandra
Parthenocissus quinquefolia	Virginia Creeper
Parthenocissus tricuspidata	Boston Ivy
Pennisetum alopecuroides 'Hamelin'	Hamelin Dwarf Fountain Grass
Perovskia atriplicifolia 'Little Spire'	Little Spire Russian Sage
Polygonum aubertii 'Lemon Lace'	Lemon Lace Silver Fleece Vine
Rudbeckia fulgida 'Goldsturm' *	Goldsturm Black-eyed Susan
Salvia nemerosa 'Ostfreisland'	Ostfreisland Salvia
Sedum 'Autumn Joy'	Autumn Joy Sedum
Sporobolus heterolepis *	Prairie Dropseed
Veronica spicata 'Royal Candles'	Royal Candles Veronica
Vinca minor	Periwinkle
Waldstenia ternata	Barren Strawberry

## Evergreen Shrubs

Botanical Name	Common Name
Juniperus chinensis 'Kallay's Compact'	Kallay's Compact Juniper
Juniperus chinensis 'Klehm Compact'	Klehm Compact Juniper
Juniperus procumbens 'Nana'	Dwarf Japanese Garden Juniper
Taxus x media 'Runyan'	Runyan Yew
Taxus x media 'Taunton'	Taunton Yew
Thuja occidentalis 'Emerald' *	Emerald Eastern Arborvitae
Thuja occidentalis 'Holmstrup' *	Holmstrup Eastern Arborvitae

## Seasonal

Summer:	Fall:	Winter:	Spring:
Begonia	Cabbage	Evergreen boughs	Daffodils
Dusty Miller	Kale	Red Twig Dogwood	Pansy
Geranium	Mums		Tulip
Impatient	Pansy		
Lantana			
Petunia			

Final selection of seasonal plants subject to budget, quantity and design

\* indicates native plant

PREPARED FOR:

Village of Lombard

# Plant Palette

Lombard, Illinois

  
**Hitchcock  
 Design Group**  
 Creating Better Places®

PROJECT NUMBER: 03-0894-002  
 All drawings are preliminary and subject to change.  
 © 2009 Hitchcock Design Group

The following is a general outline of routine landscape maintenance activities. All activities shall be scheduled accordingly with the weather.

### January

- Remove litter from turf and landscape areas
- Remove litter caught in trees and shrubs
- Check and maintain all winter coverings, including evergreen boughs and holiday lighting
- Prune damaged tree branches as needed

### February

- Remove litter from turf and landscape areas
- Remove litter caught in trees and shrubs
- Remove all winter coverings, including evergreen boughs, and holiday lighting
- Check perennial plantings and reset those plants that have been heaved from the ground due to frost
- Inspect all trees, shrubs (including roses), and vines to determine pruning needs and complete this work prior to bud break

### March

- Remove litter from turf and landscape areas
- Remove litter caught in trees and shrubs
- Check perennial plantings and reset those plants that have been heaved from the ground due to frost
- Inspect all trees, shrubs (including roses), and vines to determine pruning needs and complete this work prior to bud break

### April

- Remove litter from turf and landscape areas
- Remove litter caught in trees and shrubs
- Perform spring bed clean-up in all landscape locations prior to any required division of perennials
- Trim back all perennials not previously cut back
- Water semi-irrigated and non-irrigated landscape areas as required
- Mulch planting areas
- Begin monitoring for pest and disease problems
- Begin mowing lawn areas as needed
- Monitor all planting beds for weedy conditions and take appropriate measures to maintain all plantings in a weed-free condition

### May

- Remove litter from turf and landscape areas
- Remove litter caught in trees and shrubs
- Complete required perennial division
- Braid or remove 25% of green foliage from spring blooming bulbs
- Trim back all perennials as required
- Water landscaped areas as needed
- Mulch planting areas as needed
- Continue monitoring for pest and disease problems
- Monitor all planting beds for weedy conditions and take appropriate measures to maintain all plantings in a weed-free condition

### June

- Remove litter from turf and landscape areas
- Remove litter caught in trees and shrubs
- Monitor newly installed plantings for watering requirements
- Monitor all planting beds for weedy conditions and take appropriate measures to maintain all plantings in a weed free condition
- Monitor all landscaped areas for pest and disease problems
- Mulch planting areas as needed
- Prune all shrubs and hedges (following bloom period if appropriate)

### July

- Remove litter from turf and landscape areas
- Remove litter caught in trees and shrubs
- Continue to monitor plantings installed this season for watering needs
- Monitor all planting beds for weedy conditions and take appropriate measures to maintain all plantings in a weed-free condition
- Monitor all landscape areas for pest and disease problems
- Monitor mulch depth and adjust as needed

### August

- Remove litter from turf and landscape areas
- Remove litter caught in trees and shrubs
- Begin any required deadheading, dead leafing, pruning, and pinching of perennials and annuals
- Monitor all planting beds for weedy conditions and take appropriate measures to maintain all areas in a weed free condition
- Monitor mulch depths and adjust as needed
- Order spring blooming bulbs for fall installation
- Monitor all landscaped areas for pest and disease problems

### September

- Remove litter from turf and landscape areas
- Remove litter caught in trees and shrubs
- Continue any required deadheading, dead leafing, pruning, and pinching of perennials and annuals
- Monitor all planting beds for weedy conditions and take appropriate measures to maintain all areas in a weed free condition
- Continue to monitor mulch depths as needed
- Survey all planting areas specified and note any dead, damaged or missing plants and begin installing new plant material
- Prune shrubs and hedges for the last time

### October

- Remove litter from turf and landscape areas
- Remove litter caught in trees and shrubs
- Begin fall clean-up of planting beds
- Do not cut back perennials until they go dormant
- Remove annuals
- Monitor all planting beds for weedy conditions and take appropriate measures to maintain all areas in a weed free condition
- Complete installation of new plant materials by the middle of this month
- Begin installing spring blooming bulbs
- Install and maintain holiday decorations as desired

### November

- Remove litter from turf and landscape areas
- Remove litter caught in trees and shrubs
- Complete installation of spring blooming bulbs
- Begin performing any necessary tree pruning maintenance once the trees are dormant
- Complete fall bed clean up
- Perennial foliage shall not be cut back until the plants go dormant
- Install winter evergreen covers
- Maintain all winter coverings, including evergreen boughs
- Maintain all lighting in operating order, including all seasonal lighting

### January

- Remove litter from turf and landscape areas
- Remove litter caught in trees and shrubs
- Maintain all winter coverings, including evergreen boughs
- Maintain all lighting in operating order, including all seasonal lighting

PREPARED FOR:

Village of Lombard

# Landscape Maintenance Schedule

Lombard, Illinois



PROJECT NUMBER: 03-0894-002  
All drawings are preliminary and subject to change.  
© 2009 Hitchcock Design Group