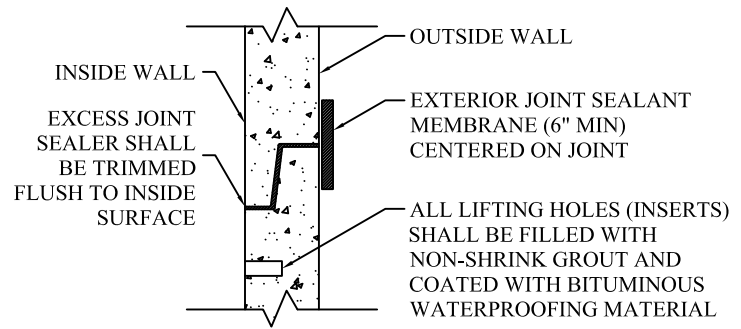
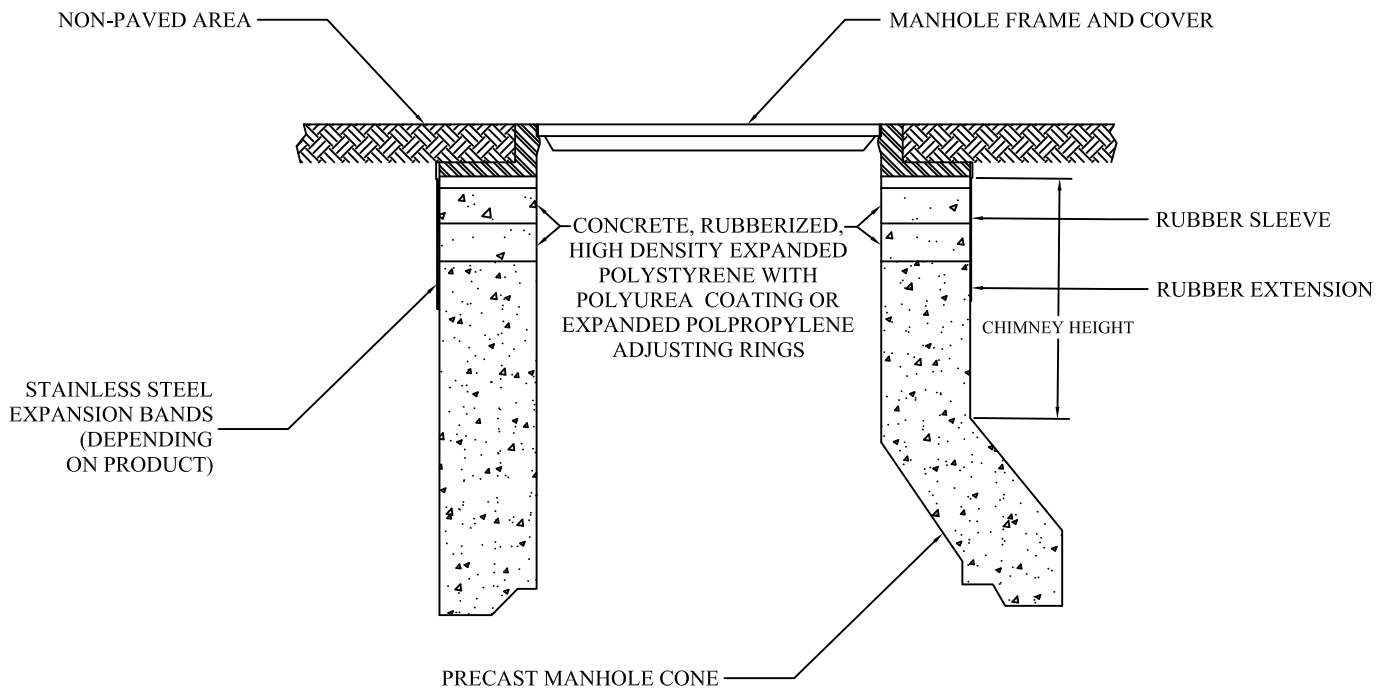


**JOINT ASSEMBLY
DETAIL**



**COMPLETED JOINT
DETAIL**

FOR PAVED AND NON-PAVED AREAS



**SECTIONAL VIEW PRECAST CONE AND CHIMNEY
FOR NON-PAVED AREAS**

GENERAL NOTES:

1. JOINT SEALANT - ALL SURFACES SHALL BE FREE OF DIRT, OIL AND DEBRIS. APPLY A CONTINUOUS LAYER OF NON-HARDENING PREFORMED BITUMINOUS MASTIC MATERIAL TO EACH JOINT. EXCESS JOINT SEALANT SHALL BE TRIMMED FLUSH TO BOTH INSIDE AND OUTSIDE SURFACES OF THE STRUCTURE.

APPROVED PRODUCTS ARE AS FOLLOWS:

- EX-STIK PREMIUM BUTYL SEALANT BY PRESS-SEAL CORPORATION.
- CS-202 BUTYL RUBBER SEALANT BY CONSEAL
- RU106 RUB'R-NEK BY HENRY

2. ALL PRODUCTS SHALL BE PROVIDED BY AN AUTHORIZED VENDOR AND SHALL BE INSTALLED PER THE MANUFACTURERS SPECIFICATIONS.

APPROVED EXTERIOR JOINT SEALANT MEMBRANES ARE AS FOLLOWS:

- CRETEX WRAP BY CRETEX SPECIALTY PRODUCTS
- INFI-SHIELD GATER WRAP BY SEALING SYSTEMS, INC.
- BARREL WRAP BY ADAPTOR

APPROVED EXTERNAL CHIMNEY PRODUCTS ARE AS FOLLOWS:

- CLASSIC EXTERNAL CHIMNEY SEAL BY CRETEX SPECIALTY PRODUCTS
- INFI-SHIELD RUBBER EXTERNAL CHIMNEY SEALING BY SEALING SYSTEMS, INC.
- INTERNAL/EXTERNAL ADAPTOR SEAL (IEA SEAL) BY ADAPTOR

REV.:	REV.:
REV.: TEG	REV.: 02-27-2024
DRAWN BY: VJGL	DATE: 02-16-1998

**PRECAST CONE
AND CHIMNEY**

VILLAGE OF LOMBARD
SANITARY 6